



www.jbctools.com



Guide tube for SF250-A

Ref. 0022295

Packing List

The following items should be included:

Guide tube 1 unit
Ref. 0022295

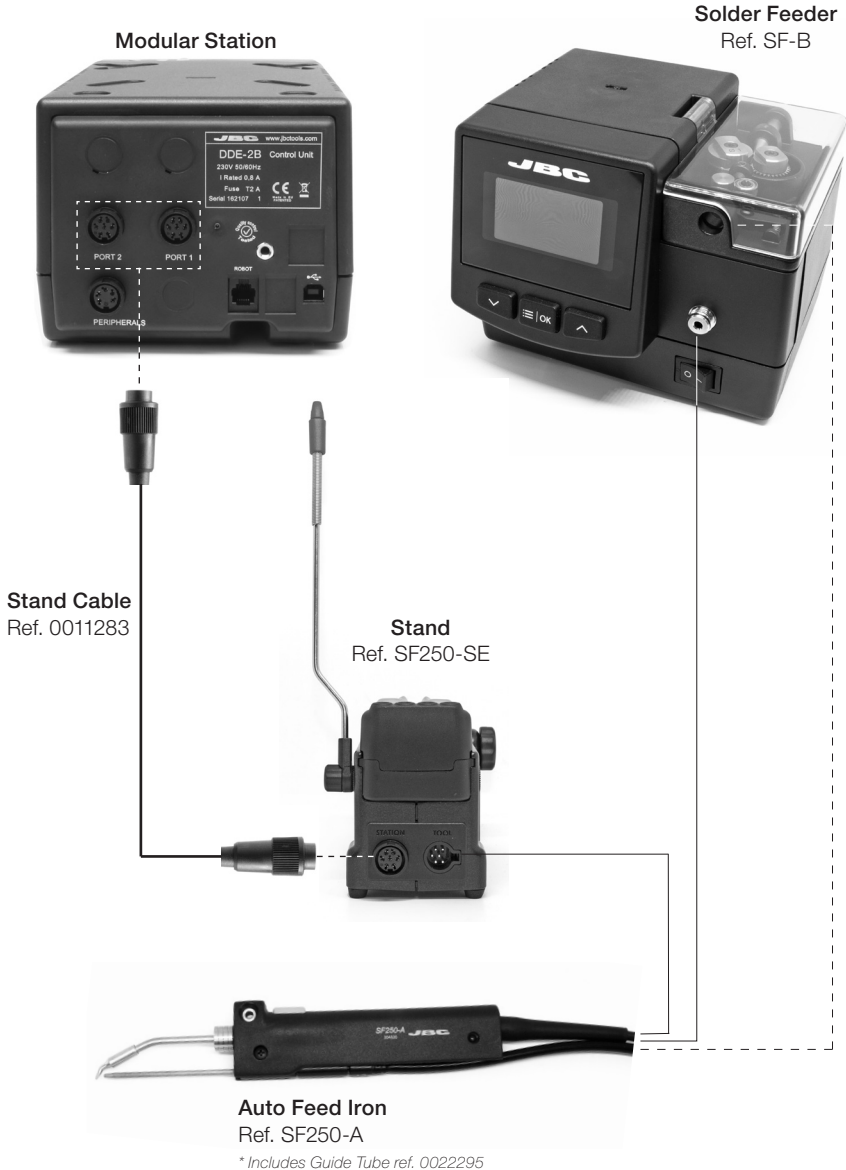


Manual 1 unit
Ref. 0022296



Features

The Auto Feed Iron is connectable to the Solder Feeder SF and a Modular Station at the same time.

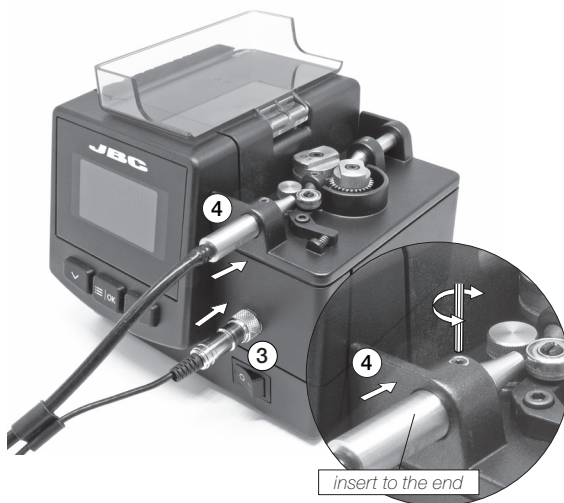


Guide tube assembly

1. Insert the Guide Tube in the tool. You must leave **a gap of 8-10 mm** (0.31 - 0.40 in) between the tip and the end of the Guide Tube.
2. Tighten the guide tube screw to block the position of the guide.



3. Connect the jack in de SF station.
4. Push the Guide Tube to the end and tighten the screw.



5. Connect the tool to its stand SF250-SE.

Maintenance

Before carrying out maintenance, always allow the equipment to cool.

- Before carrying out maintenance, always unplug the stand and the tool.
- Check periodically that the metal parts of the tool and the stand are clean to ensure detection of the tool when it is in the stand. Use a damp cloth or alcohol.
- Periodically check all cables and tubes connections.
- Replace any defective or damaged pieces. Use original JBC spare parts only. Repairs should only be performed by a JBC authorized technical service.

Safety



It is imperative to follow safety guidelines to prevent electric shock, injury, fire or explosion.

- Do not use the stands for any purpose other than soldering or rework.
- The power cord must be plugged into approved bases. Be sure that it is properly grounded before use. When unplugging it, hold the plug, not the wire.
- The tool should be placed in the stand when is not in use in order to activate the sleep mode. The soldering tip, the metal part of the tool and the stand may still be hot even when the station is turned off. Handle with care, including when adjusting the stand position.
- Avoid the contact of flux with skin or eyes to prevent irritation.
- Be careful with the fumes produced while soldering.
- Keep your workplace clean and tidy. Wear appropriate protection glasses and gloves while working to avoid personal harm.
- Utmost care must be taken with liquid tin waste which can cause burns.
- Maintenance must not be carried out by children unless supervised.

Notes

This image shows a single sheet of white paper with horizontal ruling lines. The lines are evenly spaced and run across the width of the page. There are no margins, text, or other markings on the paper.

This image shows a single sheet of white paper with horizontal ruling lines. The lines are evenly spaced and run across the width of the page. There are no margins, text, or other markings on the paper.

Specifications

- Net Weight: 50 g (0.45 lb)
- Guide tube length 126 cm (49.6 in)
- Diameter of solder wire: Ø 1,0 mm (0.040 in)

Complies with CE standards.
ESD protected.

JBC

Warranty

JBC's two-year warranty covers this equipment against all manufacturing defects, including the replacement of defective parts and labour.

Warranty does not cover product wear or misuse.

In case of any manufacturing defect, the equipment must be returned, postage paid, to the dealer where it was purchased.



This product should not be thrown in the garbage.

In accordance with the European directive 2002/96/EC, electronic equipment at the end of their life must be collected and returned to an authorized recycling facility.



Manual in other languages available on our website

www.jbctools.com